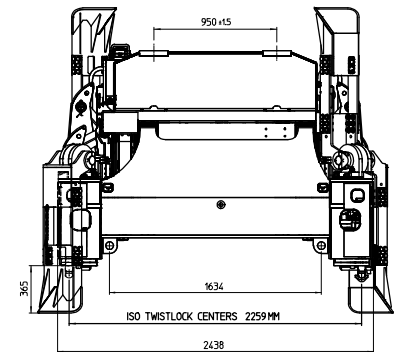
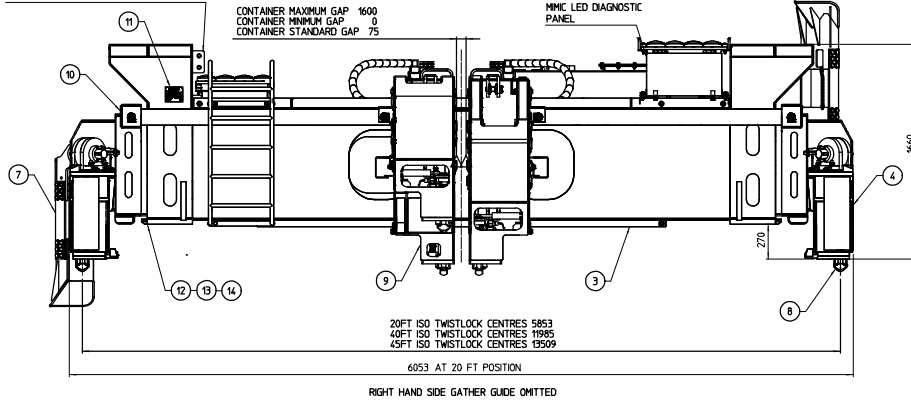


QUICK COUPLING CONNECTION TO HEADBLOCK  
REFER TO HYDRAULIC CIRCUIT FOR DETAIL

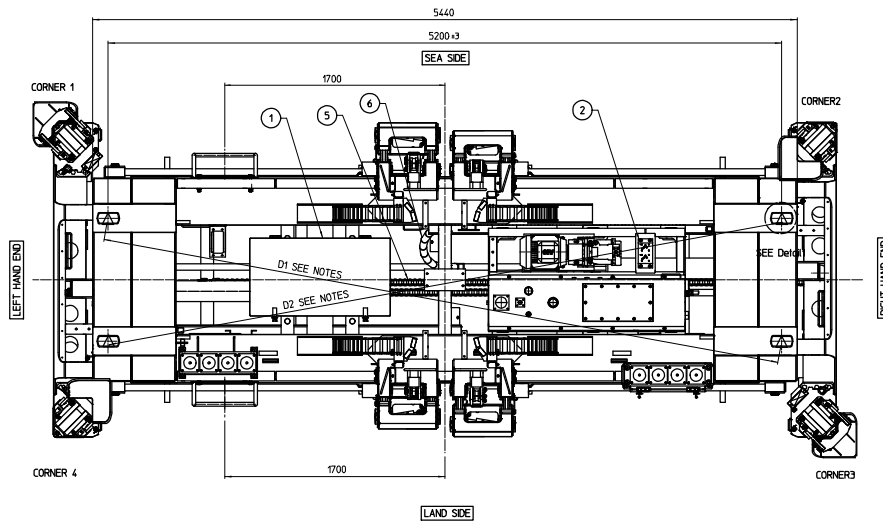
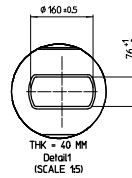


SAFE WORKING LOAD : 2X32.5 TONNES  
TWINLIFT : 50 TONNES  
SINGLELIFT : 150% SWL  
TEST LOAD : 150% SWL

CALCULATED WT OF SPREADER : 14500 KG  
CAPACITY OF LIFTING LUG : 4 X 12.5 TONNES

NOTE:

1. (D1-D2) < 5
2. THE BOTTOM PLATES OF FOUR TELESCOPIC ARM AND TWINLIFT ARM SHOULD BE APPLIED WITH OPEN GEAR COMPOUND
3. ALL FASTENERS 12MM AND LESS SHALL BE STAINLESS STEEL UNLESS OTHERWISE SPECIFIED



**RAM**  
**SPREADERS**

RAM SHAG LIFTING TECHNOLOGIES PTE LTD  
160A Gila Circle Singapore 629635  
Tel: +65 6716 9400 Fax: +65 6261 1900  
Web: www.ramspreaders.com

COPYING OF THIS DOCUMENT AND GIVING IT TO OTHERS AND THE USE OR COMMUNICATION OF THE CONTENTS THEREOF ARE FORBIDDEN WITHOUT EXPRESS AUTHORITY. OFFENDERS ARE LIABLE TO THE PAYMENT OF DAMAGES. ALL RIGHTS ARE RESERVED IN THE EVENT OF THE GRANT OF A PATENT OR THE REGISTRATION OF A UTILITY MODEL OR DESIGN.

ALL STEEL STRUCTURE WORKS SHALL BE EXECUTED AS PER THE DRAWING AND IN 100% CLASS EXC UNLESS OTHERWISE STATED. IF IN DOUBT, ASK.

3RD A PROJECTION

ALL DIMENSIONS IN MILLIMETRES  
ALL TOLERANCES UNLESS OTHERWISE STATED  
FABRICATION MACHINING  
ISO 2768-MS ISO 2768-MK

CLIENT  
PROJECT CATEGORY / TITLE  
RAM TELESCOPIC SPREADER  
GENERAL ARRANGEMENT

DESIGNED BY	CHECKED BY	DATE	PART / DRAWING NO.	DATE	ZONE	REV.	NO.
RS.LT	RS.LT	23-05-19	MB057-00-00				
DESIGNED BY	CHECKED BY	DATE	PART / DRAWING NO.	DATE	ZONE	REV.	NO.
RS.LT	RS.LT	23-05-19	MB057-00-00				
DESIGNED BY	CHECKED BY	DATE	PART / DRAWING NO.	DATE	ZONE	REV.	NO.
RS.LT	RS.LT	23-05-19	MB057-00-00				

SHEET  
1  
OF  
2